

- This Series of V-CHIP Capacitors Are Designed for Low Z at High Frequency
- Low Impedance
- 2000 Hours at 105°C
- High Reliability

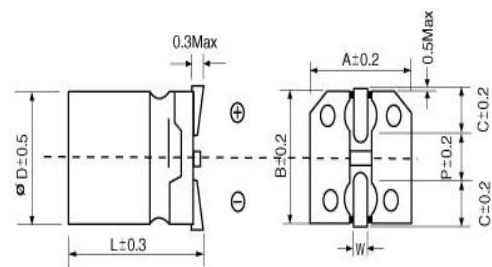
■ SPECIFICATIONS

Operating Temperature Range	-55~+105°C									
Rated Voltage Range	6.3 ~ 100V									
Capacitance Range	4.7 ~ 1500uF									
Capacitance Tolerance	±20% (a t 20°C, 120Hz)									
Leakage Current	I ≤ 0.01 CV or 3 uA whichever is greater (after 2 minutes) I: Leakage Current (uA) C: Nominal Capacitance (uF) V: Rated Voltage (V)									
Dissipation Factor (at 20°C, 120Hz)	Rated Voltage(V)	6.3	10	16	25	35	50	63	80	100
	tanδ(max.)	0.26	0.19	0.16	0.14	0.12	0.10	0.08	0.08	0.07
When nominal capacitance is over 1000uF,tanδ shall be add 0.02 to the listed value increase with of every 1000uF										
Temperature Characteristics (Impedance Ratio at 120Hz)	Rated Voltage(V)	6.3	10	16	25	35	50	63	80	100
	Z-25°C/Z+20°C	2	2	2	2	2	2	2	2	2
	Z-40°C/Z+20°C	3	3	3	3	3	3	3	3	3
	Z-55°C/Z+20°C	4	4	4	3	3	3	3	3	3
Load Life (+105°C)	The following specification shall be satisfied when the capacitors are restored to 105°C after the rated voltage is applied for 2000 hours at maximum operating temperature.									
	Capacitance change	±30% of initial measured value(Ø10 : 35%)								
	tanδ	≤ 200% of initial specified value(Ø10 : 300%)								
	Leakage current	≤ initial specified value								
Shelf Life (+105°C)	After 1000 hrs. no load test, leakage current, capacitance change and tan δ are as same as load life value.									
Soldering Heat Resistance	After reflow and then being stabilized at +20°C ,capacitor shall meet the following limits									
	Capacitance change	±10% of initial measured value								
	tanδ	≤ initial specified value								
	Leakage current	≤ initial specified value								

■ DIMENSION

unit : mm

ΦD	L	A	B	C	W	P
4	5.4	4.3	4.3	1.8	0.65±0.1	1.0
5	5.4	5.3	5.3	2.2	0.65±0.1	1.5
6.3	5.4	6.6	6.6	2.6	0.65±0.1	1.8
6.3	7.7	6.6	6.6	2.6	0.65±0.1	1.8
8.0	10.2	8.3	8.3	3.4	0.90±0.2	3.1
10.0	10.2	10.3	10.3	3.5	0.90±0.2	4.6



■ STANDARD RATINGS

V uF	6.3			10			16			25			35		
	Size(mm) ØDxL	Impedance Ω	Ripple mArms	Size(mm) ØDxL	Impedance Ω	Ripple mArms	Size(mm) ØDxL	Impedance Ω	Ripple mArms	Size(mm) ØDxL	Impedance Ω	Ripple mArms	Size(mm) ØDxL	Impedance Ω	Ripple mArms
4.7													4x5.4	1.35	90
10							4x5.4	1.35	90	4x5.4	1.35	90	4x5.4	1.35	90
22	4x5.4	1.35	90	4x5.4	1.35	90	4x5.4	1.35	90	5x5.4	0.70	160	5x5.4	0.70	160
33				4x5.4	1.35	90				5x5.4	0.70	160	6.3x5.4	0.36	240
47	4x5.4	1.35	90				5x5.4	0.70	160	6.3x5.4	0.36	240	6.3x5.4	0.36	240
68							6.3x5.4	0.36	240	6.3x5.4	0.36	240	6.3x7.7	0.34	280
100	5x5.4	0.70	160							6.3x7.7	0.34	280	6.3x7.7	0.34	280
150				6.3x5.4	0.36	240	6.3x7.7	0.34	280	8x10.2	0.16	600	8x10.2	0.16	600
220	6.3x5.4	0.36	240	6.3x7.7	0.34	280	6.3x7.7	0.34	280	8x10.2	0.16	600	8x10.2	0.16	600
330	6.3x7.7	0.34	280	8x10.2	0.16	600	8x10.2	0.16	600	8x10.2	0.16	600	10x10.2	0.08	850
470	8x10.2	0.16	600	8x10.2	0.16	600	8x10.2	0.16	600	10x10.2	0.08	850			
1000	8x10.2	0.16	600	10x10.2	0.08	850									
1500	10x10.2	0.08	850												

V uF	50			63			80			100		
	Size(mm) ØDxL	Impedance Ω	Ripple mArms	Size(mm) ØDxL	Impedance Ω	Ripple mArms	Size(mm) ØDxL	Impedance Ω	Ripple mArms	Size(mm) ØDxL	Impedance Ω	Ripple mArms
4.7	4x5.4	2.9	60	5x5.4	3.0	50	6.3x5.4	3.0	40			
10	5x5.4	1.52	85	6.3x5.4	1.5	80	6.3x7.7	2.4	60			
22	6.3x5.4	0.88	165	6.3x7.7	1.2	120	8x10.2	1.3	130	8x10.2	1.3	130
33	6.3x7.7	0.68	195	8x10.2	0.65	250	8x10.2	1.3	130	10x10.2	0.7	200
47	6.3x7.7	0.68	195	8x10.2	0.65	250	10x10.2	0.7	200			
68				8x10.2	0.65	250						
100	8x10.2	0.34	350	10x10.2	0.35	400						
150	10x10.2	0.18	670									
220	10x10.2	0.18	670									

Impedance at 100KHz, 20°C

Ripple Current: mA(rms) at 100KHz, 105°C